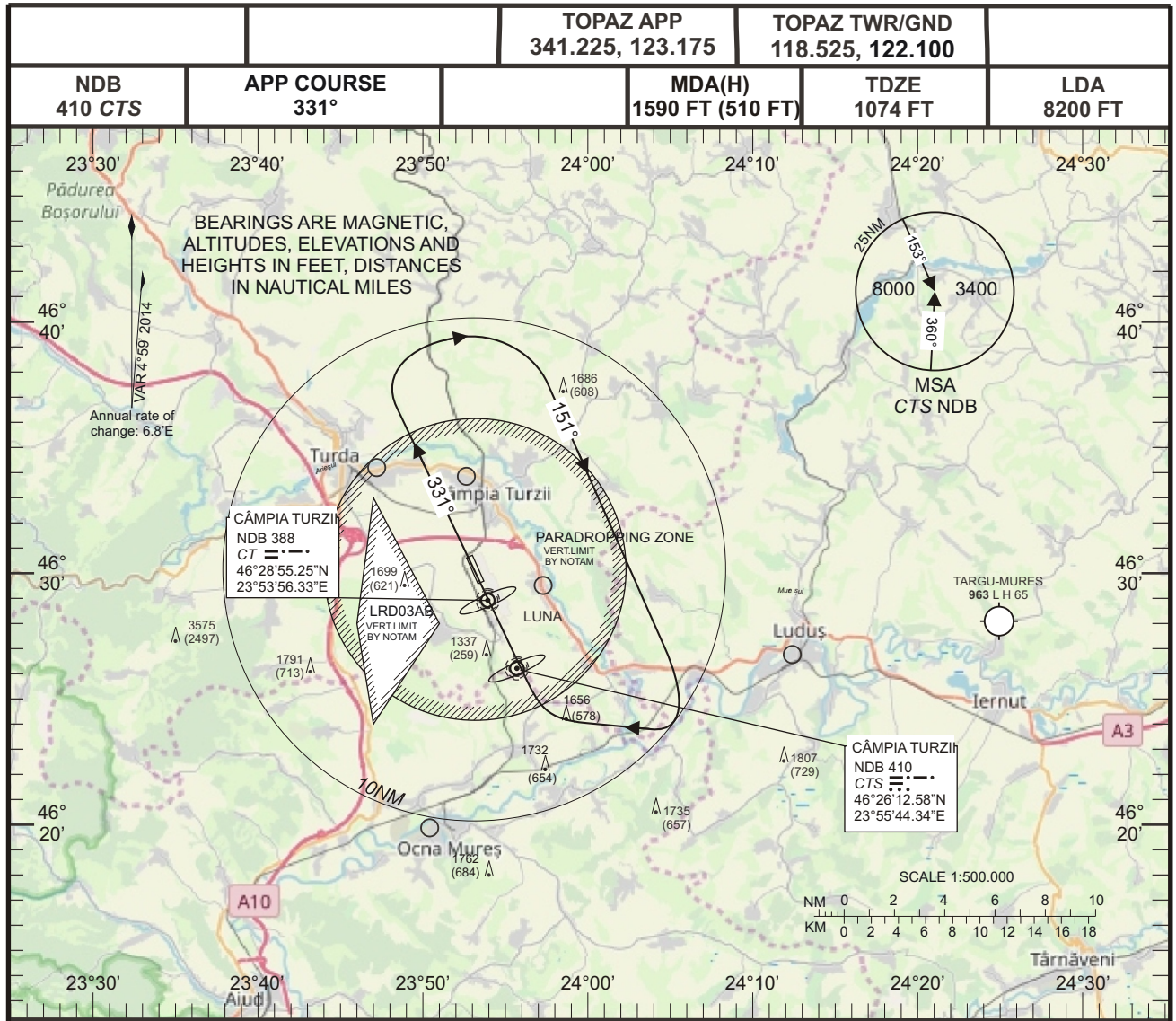
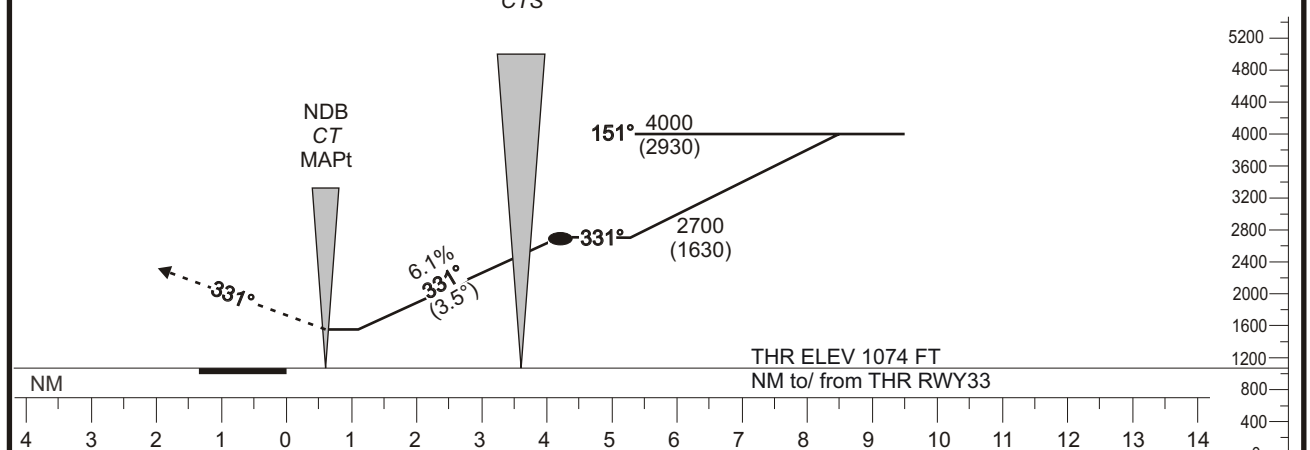


VISUAL APPROACH CHART RWY 33

VISUAL APPROACH CHART **AERODROME ELEV 1078 FT** **CÂMPIA TURZII (LRCT)**
 HEIGHTS RELATED TO THR. ELEV.1074 FT **RWY 33**



MISSED APPROACH
 Climb RWY heading to 4000 FT QNH
 then turn RIGHT for visual approach procedure.



CAT	BASIC GNSS		VM (C)	
	MDA(H)	VIS	MDA(H)	VIS
A	1600 (510)	1600	1840 (760)	1600
B	1600 (510)	1600	1840(760)	1600
C	1600 (510)	2400	1940 (860)	2400
D	1600 (510)	2800	2040 (9600)	3600
E	1600 (510)	3200	2140 (1060)	4800

Ground speed	kts	90	100	130	160	180	200	220
Rate of descent	ft/min	478	531	690	849	955	1061	1167